



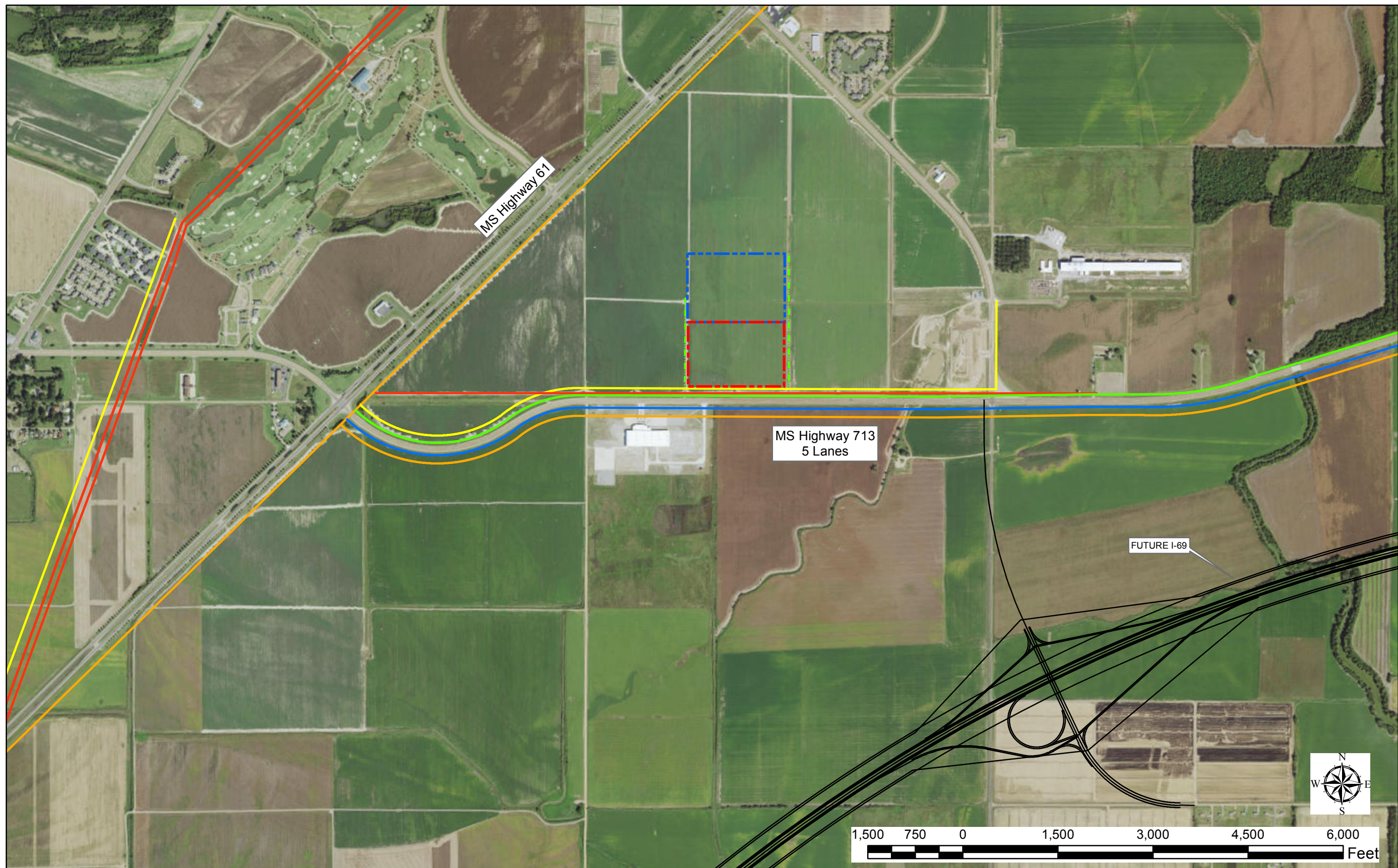
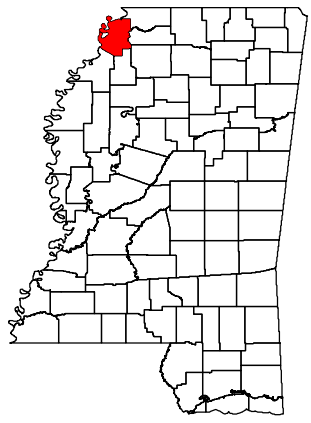
BUSINESS DEVELOPMENT MISSISSIPPI

DELTA CROSSROADS BUSINESS PARK UTILITY MAP



1301 Main Street P.O. Box 1888 Tunica, MS 38676

662.363.2865 cfinkley@tunicachamber.com www.tunicachamber.com



**Legend**

- Proposed\_Boundary\_30 Ac 1035' x1650'
- Proposed\_Expansion\_40 Ac 1115' x1650'
- Existing Drain
- Future I-69
- Ex CN Rail Mainline
- Ex 8" Sewer Force Main
- Ex 230Kv Power Line
- Ex 115Kv Power Line
- Ex 4" Gas Line
- Ex 12" Water Main
- Ex Fiber Optic Line

**NOTES**

These drawings are provided merely to assist in economic development efforts. The Entergy Companies make no representations or warranties whatsoever regarding the accuracy or completeness of any information contained herein nor the condition or suitability of any properties. Users should direct inquiries about any property to the listing broker for that property.

**SOURCE**  
Aerial Imagery provided by ESRI  
Created by Chad A. Wages, P.E.  
Date: 11.09.15

**WAGES Consulting, LLC**